

The **EXXOTEST® DT-M008** model is a teaching support that allows analyzing the transformation of mechanical energy into electrical AC then DC.

OBJECTIVES

- Analyze the operation of an alternator.
- Identify the nature of the signals emitted by the generator.
- The circuit diagram reading and comprehension.
- Use of suitable tools to measure the signals

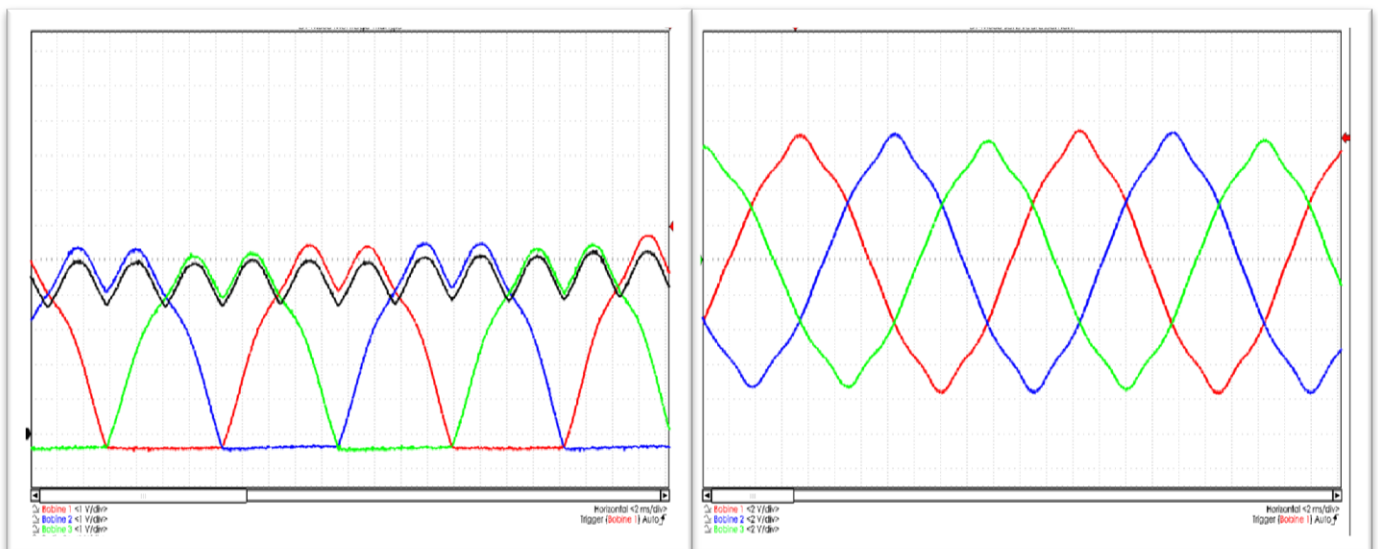


DESIGN

The **DT-M008** introduces the technologies used by vehicle's alternator. This model gives the possibility to discover the energy transformation process (mechanical energy into electrical energy). It also allows the measurement of alternating current or rectified current (star, triangle and Diode Bridge).

Using the sockets on the front panel and the cables provided with model, the student should carry out different types of connections. Then he will simulate the rotation of the motor with the handle in order to pick up the studied signals. All measurement points are accessible via sockets and therefore usable with a multimeter or an oscilloscope.

Examples of traces made using the software REFLET®:



ACCESSORIES



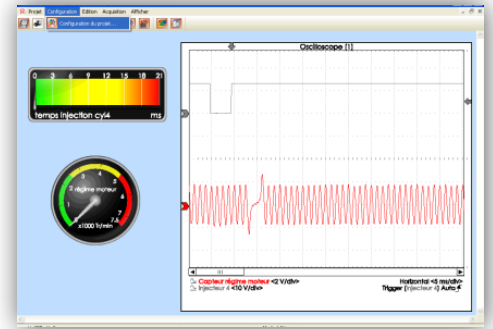
The **DT-M008** module may be connected to the **EXXOTEST® CL550** diagnostic tool. This multi-functions tester brings together the functions of Oscilloscope, Mutimeter and OBD II scantool.

- 100% evolutionary: USB PC link for printout, data export, updates,
- 100% **EXXOTEST®**: easy, user friendly and efficient.

Main features:

- 2 channels multi-meter with trace mode,
- 2 channels Oscilloscope, OBD II 9 modes Scan tool.

This module may be also associated to **REFLET®** that is a measurements logging system specifically designed for automotive applications. It allows real-time playback and recording, curves tracing, 4 channels Oscilloscope and more. **REFLET®** also provides a 3D instruments interface and dynamic visualization of 3D objects.



OTHER

- Delivered with:
 - use and teaching instruction book,
 - banana plug cable assemblies according to the module needs,
 - ALF1210 –12V / 1 Amp stabilised alimentation.
- Power supply: 220/110Vac – 50/60Hz.
- Size: 630 X 420 X 420 mm (transportation box).
- Gross weight : 15 Kg (ready to ship).
- Net weight: 12 Kg.

Find all **EXXOTEST®** products on the Internet: www.exxotest.com