

The MT-C7000 model is a real A/C automotive component teaching support intended for studying the air-conditioning cold production applied in automotive. This model also allows teaching maintenance operations and can be associated to professional tools such as A/C refilling stations and diagnostic tool.



OBJECTIVES

- Visualize and understand how is build an A/C automotive system.
- Apply cleaning and refilling maintenance operations.
- Proceed to cold loop components diagnostics.

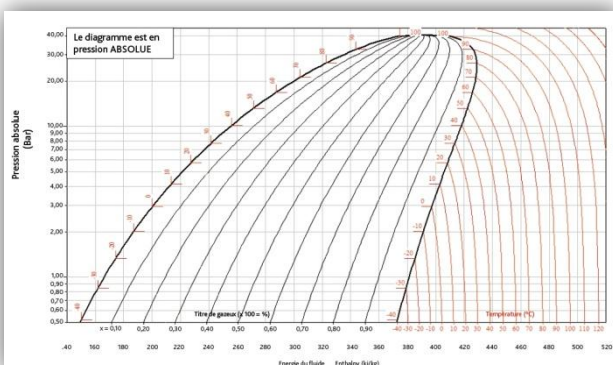
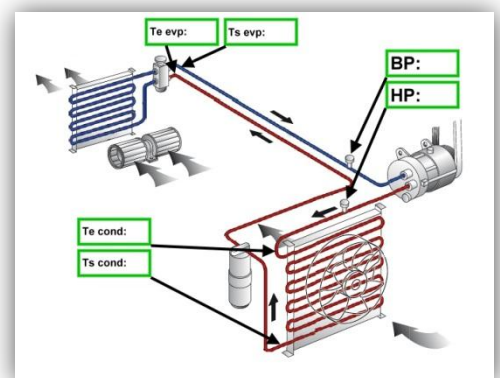
DESIGN

Supported by a steel structure, the model embeds real A/C automotive components. Fully secured, it has the particularity to need a 220Vac power only.

SPECIFICATIONS

Real automotive components:

- Compressor R134A Sanden SD6C12,
- Condenser with fans from an additional cooling system,
- Evaporator with air pulse from an additional evaporator in second cabin,
- Desiccant filter Diam 64H120 associated to a 3 levels pressure switch,



- HP and LP service valves,
- Set of 4 pipes for the junction of the cooling elements with galvanized steel fitting, hose diameter M6, M8 and M10mm depending on its location.

Construction and safety:

- Metallic chassis,
- Engine 230V three phase star assembly controlled by a dimmer 230V Hitachi X200,
- 230V socket with cable 3x1.5mm² H07 length 2.5m,
- Breaker 230V 10A curve C10 and 25A 30mA differential,
- Electrical motor start contactor with emergency stop button,
- Switched mode power supply 12V 15A for the low voltage part,
- Low voltage control panel, compressor control with safety 3 levels switch, evaporator blower motor control, condenser fans control.



EQUIPMENT:



EXXOCLIM diagnostics tool: Self-powered R134 Automotive air conditioning diagnostic tool, **EXXOCLIM** allows measurements, monitoring, and automatic diagnostic of the full system's cold loop, of a component or functionality.

Transportation box: Wood fumigated transportation and storage box.

CHARACTERISTICS:

Equipment manufactured in accordance with the requirements of following European Directives:

- Low voltage directive 73/23/CEE from Feb. 19th 1973
- Machine tools directive 98/27/CEE from June 22nd 1998
- EMC directive 2004/108/CE from December 15th 2004
- Pressure directive 97/23/CE from May 29th 1997
- Optional: Wood transportation box.
- Refrigerant: R134A - 400g load.
- 230V 16A power supply, 12V power supply sockets available on the model.
- Hoses: usage pressure 34.5 bars, usage temperature from -40°C to 120°C - SAE J2064 standard.
- Burst pressure M6 and M8 = 172 bars and M10 = 121 bars.
- Chloroprene nylon flexible hoses, black chlorodutyl polyester single braid.
- 8 points crimp, use pressure 50bars made in factory with specific machine.
- Size: 1200 X 800 X 600 mm (transportation box).
- Gross weight : 130 Kg (ready to ship with its optional wood box).
- Net weight: 85 Kg.



Find all **EXXOTEST**® products on the Internet: www.exxotest.com