



EXXOTEST® Driver kit and Utilities v2.x.x

Installation guide and recommandations

Document N° 00281720-v1

SUMMARY

1. Introduction.....	3
1.1. Aim of the document.....	3
2. Drivers history	4
2.1. USB Drivers	4
2.1.1. Windriver drivers.....	4
2.1.2. Exxotest v1.x and v2.x drivers	4
2.2. PCI drivers	5
3. Warning	6
4. Installation	7
4.1. Installation goal	7
4.2. Warning	7
4.3. Driver installation and applications update	7
4.4. Execution of the installation file	8
4.5. Technical support	11

1. Introduction

1.1. Aim of the document

The aim of this document consists in providing all information relative to the execution of the new USB & PCI drivers' installer v2.x.

2. Drivers history

2.1. USB Drivers

Until now, two drivers allowed the installation of EXXOTEST[®] USB interfaces

- The 1st one, based on a proprietary development kit (JUNGO), named WINDRIVER in our applications, is now obsolete and its support will be interrupted on next March 1st 2012.
- The 2nd one, based on a Microsoft development kit, named EXXOTEST or EXXOTEST_USB in our applications replaces now the 1st one.

Both of them are supported by a same “generic” software library “MUXDLL.dll” since its 6.1.7 version.

2.1.1. Windriver drivers

« Windriver » is the historical « Jungo » driver used since the first EXXOTEST[®] hardware and software developments.

It is now obsolete and its support will be interrupted on next March 1st 2012.

2.1.2. Exxotest v1.x and v2.x drivers

The development of the “Exxotest” driver was justified by the needs of performances which were not covered by the “Windriver “ version and by the will of ANNECY ELECTRONIQUE to fully master the scalability of its actual and next generations of MUX interfaces.

Again in a way of performance, especially justified by the need to offer a driver version compatible with 64bits Windows OS, the Exxotest driver has undergone a major overhaul in 2011 to reach a version now identified 2.x

Supported operating systems

Operating system	Exxotest V2.x driver	Exxotest V1.x driver
Windows 2000	Not supported	Supported
Windows XP (32 bits version)	Supported	Supported
Windows XP (64 bits version)	Supported	Not supported
Windows Vista (32 bits version)	Supported	Supported
Windows Vista (64 bits version)	Supported	Not supported
Windows 7 (32 bits version)	Supported	Supported
Windows 7 (64 bits version)	Supported	Not supported
LINUX	Under development	Not supported

2.2. PCI drivers

Supported operating systems

Operating system	Exxotest V2.x driver	Jungo 6.03 driver
Windows 2000	Not supported	Supported
Windows XP (32 bits version)	Supported	Supported
Windows XP (64 bits version)	Supported	Not supported
Windows Vista (32 bits version)	Supported	Not supported
Windows Vista (64 bits Version)	Supported	Not supported
Windows 7 (32 bits version)	Supported	Not supported
Windows 7 (64 bits version)	Supported	Not supported
LINUX	Not supported	Not supported

3. Warning

This new generation of drivers covering all XP to Seven, 32 and 64 bits Windows operating systems for USB and 2000 to XP 32 bits Windows operating systems for PCI, is now available on the “downloads” webpage of www.exxotest.com and in our “KIT CD MUX” in the form of an utility named:

« EXXOTEST[®] Driver Kit and utilities »

All EXXOTEST[®] applications and utilities available on the Exxotest downloads webpage of and in our “KIT CD MUX” have been updated to run optimally with this new generation of drivers:

- MUXTRACE EXPERT – 4.86 version or higher
- DLC / DLC Light – 1.19 version or higher
- MUXSERVER – 1.25 version or higher
- USBMAJ – 2.13 version or higher
- DCP – 1.14 version or higher

If you do use EXXOTEST[®] communication interfaces with third party applications (car manufacturer, component manufacturer, test bench, ...), you should ensure that the designers and / or suppliers of these applications have approved the use of these new drivers and updated their applications accordingly.

In the absence of information of providing of these new drivers from them side, we recommend the continued use of the Exxotest driver v1.47 (USB Driver Kit 1.47 installer)

4. Installation

4.1. Installation goal

The new driver installation goal is to improve the performances of applications working with EXXOTEST® card and interfaces through USB and PCI buses.

4.2. Warning

To support this update, any application which is not provided by Ancecy Electronique and which works with Exxotest card or interface (proprietary application) must realize a “dynamic load” of the software library or being recompiled with this new library.

You are strongly advised to check with people who develop these applications before performing this driver update.

4.3. Driver installation and applications update

The driver update will be performed accordingly to following steps:

- Either from the KIT CD MUX (if 2012 version or higher) that came with your EXXOTEST® card or interface, or from a downloaded version from the www.exxotest.com downloads webpage, execute the installation file :

« [Exxotest_MUX_driver_kit_2.x.x](#) »

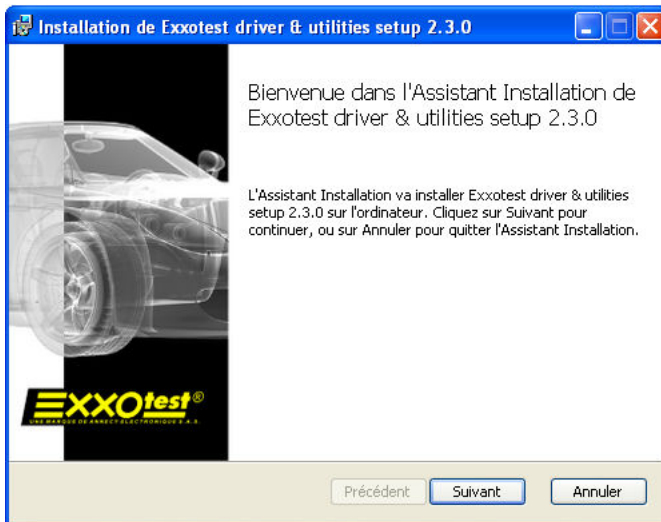
- EXXOTEST® applications update:
 - MUXTRACE EXPERT – 4.86 version or higher
 - DLC / DLC Light – 1.19 version or higher
 - MUXSERVER – 1.25 version or higher
 - USBMAJ – 2.13 version or higher
 - DCP – 1.14 version or higher
- Update of the software libraries (MUXDLL.dll) associated to your proprietary (non EXXOTEST®) working with EXXOTEST® card or interfaces.
Attention: Check with the supplier or service responsible for distributing these applications to the good compatibility of these applications before installing the EXXOTEST® Driver Kit and utilities v2.xx
- Update of the firmware of your EXXOTEST® interface (USB only) using the USBMAJ utility version 2.13 or higher.

4.4. Execution of the installation file

Step 0 : Place the installation CD that came with your hardware in the CD drive of your computer, select the « Drivers » page and launch the installation of the « Exxotest_MUX_driver_kit_2.x.x » file or visit the download area of the www.exxotest.com website to download and execute this file's latest version.

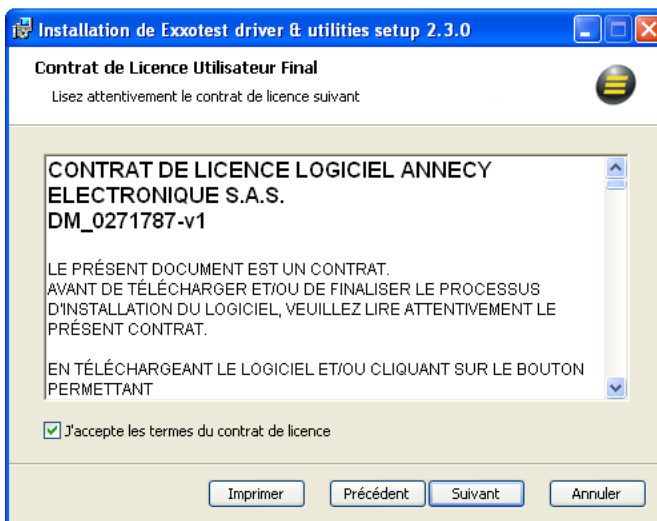
Step 1 : Starting the drivers installation

We recommend you at this step to check that no USB EXXOTEST® is connected to your PC



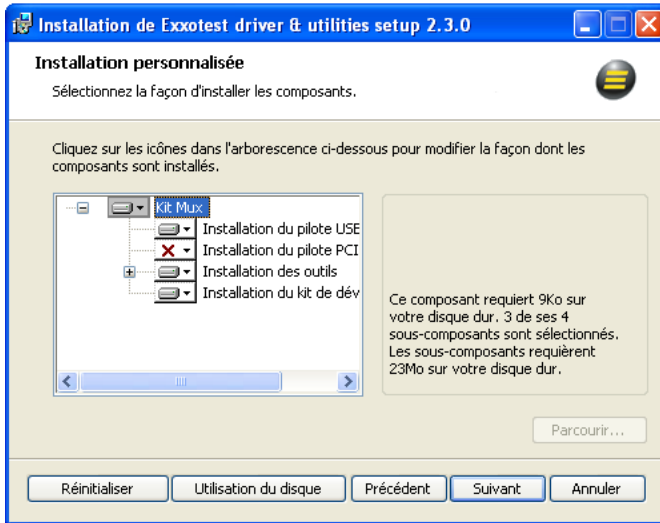
Click on « Next ».

Step 2 : Final user license contract agreement



After reading of the license contract, tick « I accept » and click on « next » to continue the procedure.

Step 3 : Installation options selection

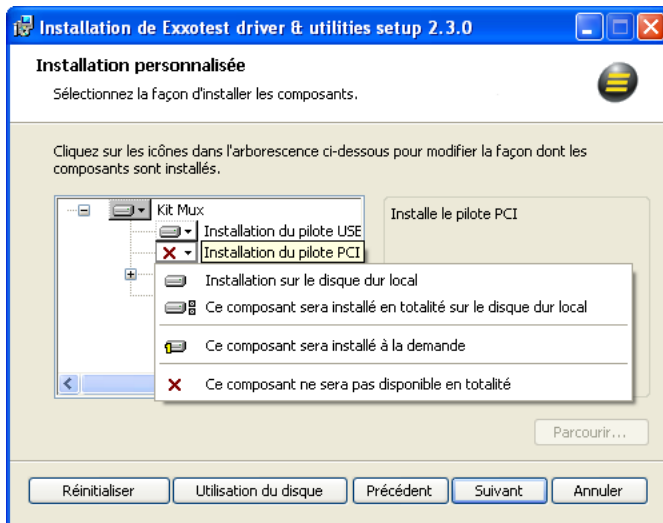


Select or unselect the options to be installed accordingly to your needs.

We therefore recommend you to keep the default configuration. Click on « Next » to continue.

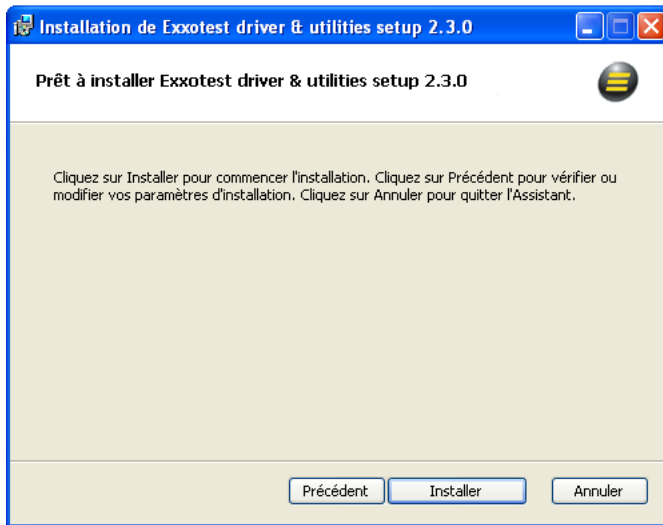
WARNING: PCI cards users, the PCI driver installation is not activated in the default configuration. WE then recommend you to proceed as described here below.

Etape 3 bis : PCI card users only



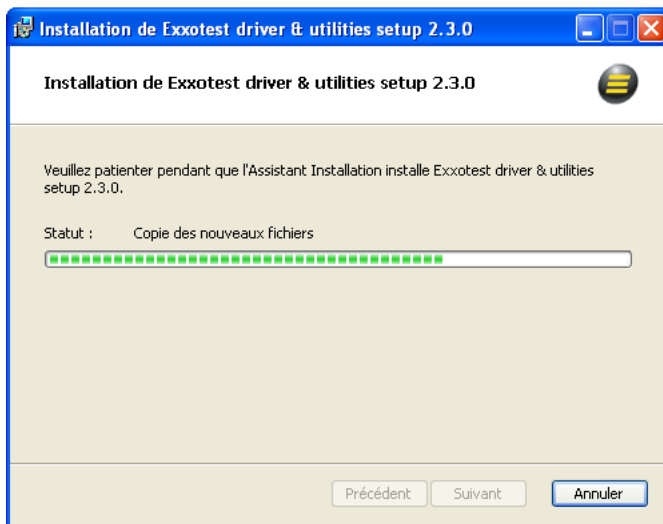
Click on the button in front of “PCI driver installation”, select the option and click on “Next” to continue.

Step 4 : Starting the installation



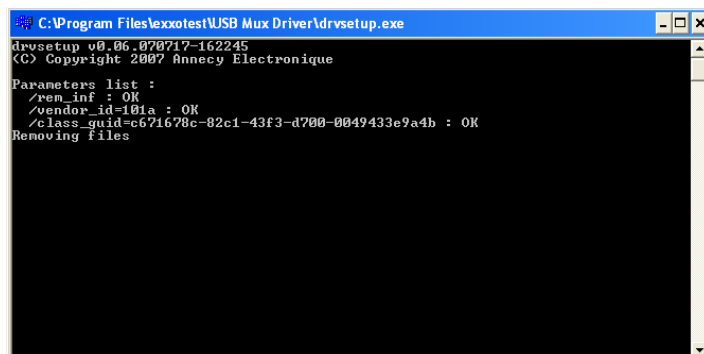
Click on “next » to start the installation as configured previously.

Step 5 : Installation



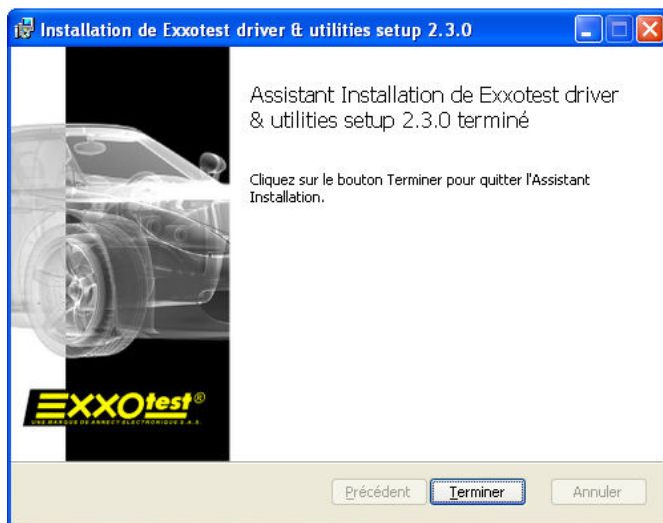
Installation in progress, no action from your part is required.

Note: the status indicator may, in certain operations stand still for several minutes.



Deleting of oldest drivers found on your PC

No action from your part is required.

Etape 6 : End of installation

Click on « Finish » to end the installation.

You can now connect your interface(s) to the PC, they will be automatically detected and installed.

4.5. Technical support

In case of any failure or help need during or after this installation, please feel free to contact our technical support « MUX »:

- E-mail : support.mux@exxotest.com
- Phone: +33 (0) 450 02 34 34

Successive editions list

Version	Date	Created / Modified by
1	10/02/2012	Gaël PERAGOUX
Modification		
Creation of the document		
Version	Date	Created / Modified by
Modification		
Version	Date	Created / Modified by
Modification		